

# WELCOME TO



## BURBANK CENTER APARTMENTS



- Large Studio Apartments
- Luxury Finishes
- Heart of Downtown Burbank
- Located Above **Burbank Fitness Club**
- Walk to Theaters/Restaurants & Shopping

**Burbank Center Apartments**  
**240 East Palm Avenue,**  
**Burbank, CA 91502**

More Information email  
[info@burbankcenterapartments.com](mailto:info@burbankcenterapartments.com)

To view call 818.843.2801

[BURBANKCENTERAPARTMENTS.COM](http://BURBANKCENTERAPARTMENTS.COM)

### **Burbank Fitness Club Features:**

- Certified Personal Trainers
- Locker Room with Showers
- +/- 23,000 Sq. Ft.
- Private Lockers
- Group Fit Classes
- Spin
- Yoga
- Zumba
- Free WiFi

[burbankfitnessclub.com](http://burbankfitnessclub.com)

SPECIAL OFFER FOR TENANTS.



BURBANK  
FITNESS CLUB



# FEATURES & AMENITIES

Burbank Center Apartments located in the heart of Downtown Burbank also known as "The Media Capital of the World", is within walking distance to the newly renovated Burbank Town Center Mall, AMC 16-screen and IMAX movie theater, and home to over 400 restaurants, shops and businesses including a Farmers Market every Saturday. This location has easy access to the 5 freeway and is adjacent to a myriad of public transportation. Approximately 3.5 miles to Bob Hope Airport and approximately 12 miles to Downtown Los Angeles.

Common areas include, courtyard, sundeck, rooftop walking track, and lounge area.

Amenities include, Special offer for tenants to Burbank Fitness Club\*, walking distance to The Burbank Town Center Mall and Downtown Burbank with ample options of dining, entertainment, personal services and shopping.

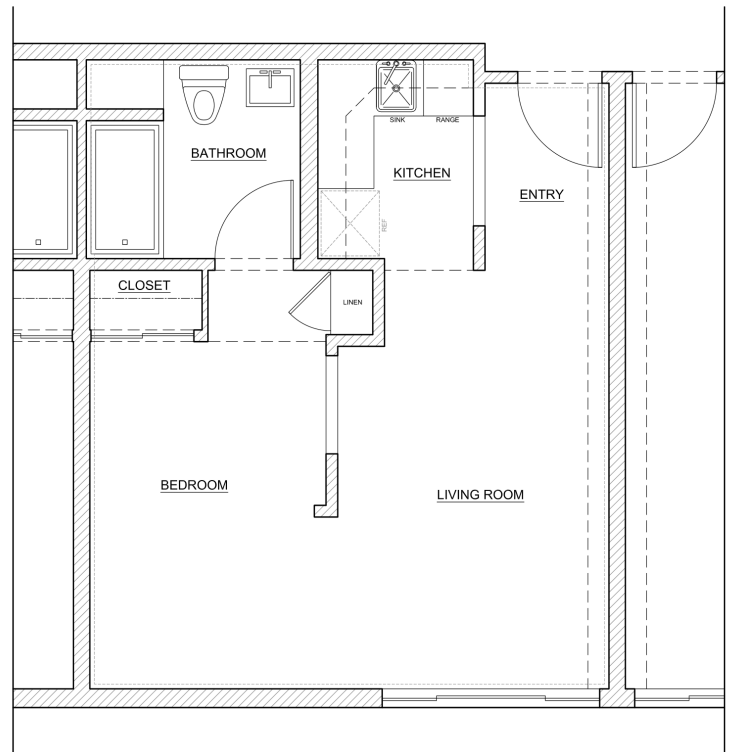
## Burbank Center Apartment Features:

- Cable Ready
- Ceiling Fans
- Controlled Access
- Dishwasher
- 2 Elevators
- Heating/Air Conditioning
- High Speed Internet Access
- Laundry Facilities
- On-site Maintenance
- Microwave
- No pets
- Private Balcony
- Range/Oven
- Refrigerator
- Smoke Free

## Utilities Included:

- Water, Trash Removal

## Floor Plans:



To view call **818.843.2801**

